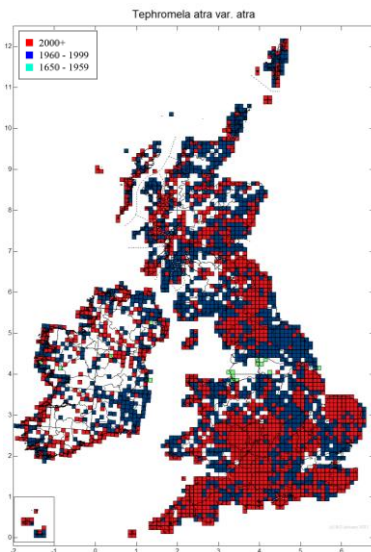
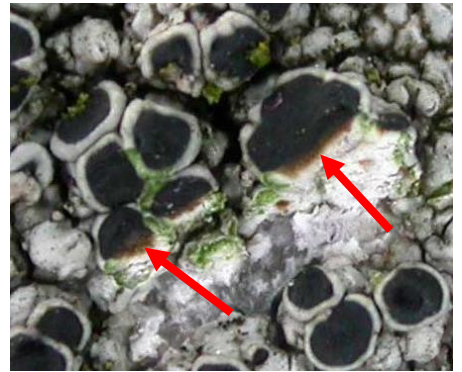


# *Tephromela atra*



**Identification:** Thallus light to medium grey, smooth or warty, often with a thin dark prothallus. Usually fertile, with the apothecia mainly in the more central part of the thallus. The apothecia are large, up to 3mm diameter. The black disc has a thick, notched grey margin. Cutting through an apothecium shows the dark purple interior.

**Chemistry:** Cortex K+ yellow, medulla UV+ ice blue.

**Similar species:** Easily confused with *Lecanora gangaleoides* but cutting through an apothecium of *L. gangaleoides* shows a pale green interior.

**Habitat:** On well-lit, siliceous rocks and walls, often on the run-off from mortar. Rarely found on trees.

**Distribution:** Common throughout Britain and Ireland.